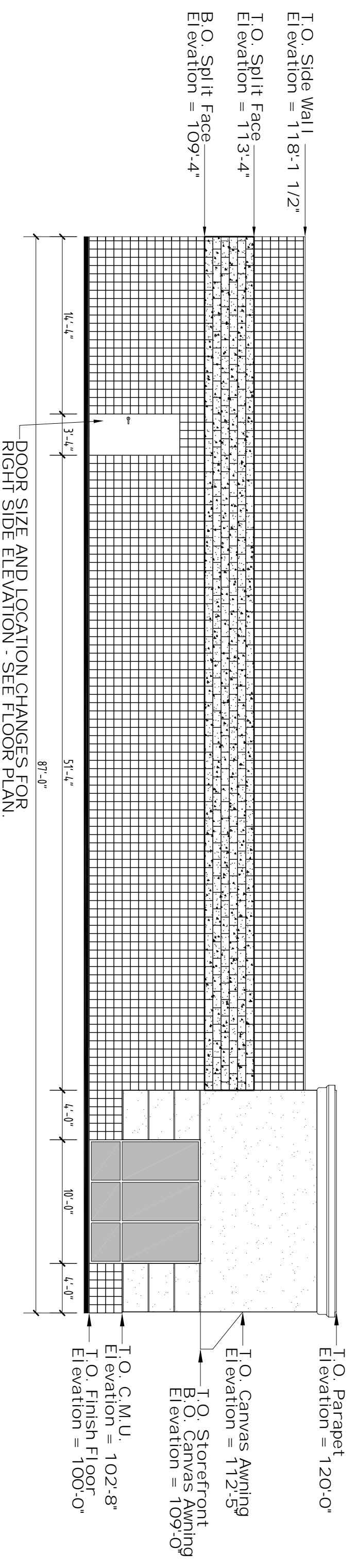


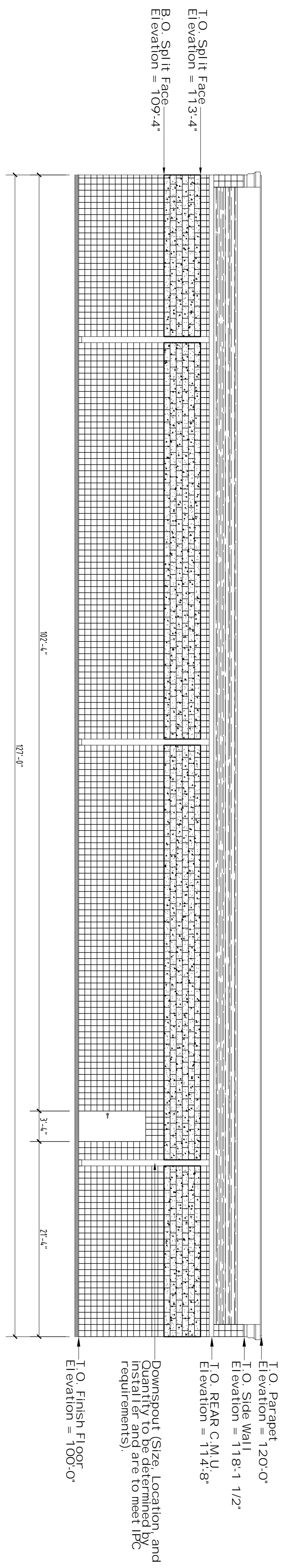
**Tyler, TX - Front Elevation**

Scale: 1/8" = 1'-0"



**Tyler, TX - Left Elevation (Rt. Side Opposite)**

Scale: 1/8" = 1'-0"



**Tyler, TX - Rear Elevation**

Scale: 1/8" = 1'-0"

DATE	REV. BY	REV. DATE	REV. BY	REV. DATE	JOB NO.
03-05-08					8031
DRAWN BY					DWG. NO.
CMB					300

TYLER, TX RETAIL CENTER  
NATIONS CONTRACTING, LLC

BUILDING ELEVATIONS  
SCALE: 1/8" = 1'-0"